



TRACER[®]

PRODUCT
CATALOGUE
2024



TRACER[®]

TRACER CONTENTS

Introduction	05	Marking Products	16
Overview	07	Marking Kits	27
Product Packaging	08	Marking & Measuring	36
Feature Highlights	09	Measuring	40
Point of Sale / Profiles	10		



**WITH STRONG BRANDING, HIGH-IMPACT PACKAGING
AND POINT OF SALE OPTIONS THE TRACER RANGE
IS A GREAT SELLER IN-STORE AT THE COUNTER OR
EQUALLY ONLINE**

The TRACER range has been developed specifically for the construction industry, aiming to provide the professional trade user with high-quality, built for purpose marking and measuring tools that are both accurate, reliable, and durable in the construction environment.



ICONS KEY

MARKING ICONS



REVERSIBLE (THIN/THICK)



CLOG FREE



2B SOFT LEAD



DEEP HOLE MARKING



PROTECTION/STORAGE



4H HARD LEAD



HOLSTER



PERMANENT



LEAD THICKNESS



REPLACEABLE LEADS



HEAVY DUTY



6x LEADS



HIGH VISIBILITY



WORKS ON WET SURFACES



X QUANTITY



QUICK DRYING INK



UNIVERSAL MARKING



XYLENE AND TOLUENE FREE



SHARPENER



PRECISION MARKING

MEASURING ICONS



ADJUSTABLE



MULTIPLE FUNCTIONS



MEMORY FUNCTION



LOCKABLE



METAL / ALUMINIUM



RECHARGEABLE



MEASURING RANGE (IMPERIAL)



HEAVY DUTY



SPOOL THICKNESS



MEASURING RANGE (METRIC)



PROTECTION/STORAGE



MULTIPLE FUNCTIONS



BEAM COLOUR

TRACER[®]

MARKING

Featuring a wide range of graphite, ink, and paint markers for various purposes, the 'perfect mark' is always at the tip of your fingers.

MEASURING

With several core measuring products and new innovations, the trade user is equipped with superior tools for quick and accurate measuring in even the most complex scenarios.

What's included

Product specifics

High impact colouring

Pictorial product explanation

Easy open pack



Multilingual

Product features

Pictorial product explanation

Pictorial material compatibility



FLOOR STANDING DISPLAY

Dimensions: H 1030 mm x W 410 mm x D 420 mm

An incredibly popular medium-sized display option due to the minimal footprint yet plentiful display area, easy to position and re-position in store as required. The cardboard display is easy to install and holds a broad range of TRACER products, providing a high-impact and well branded display area to maximise sell-through.

SHELF	
ADP2	20
ALH1	20
ALP1	10
SHELF	
AMK4	10
AMK3	10
ALP2	10
SHELF	
APMK1	10
APM1	10
AHD1	10
APTM1	10
APTM2	10
BASE	
APST2	5
ACP1	10
ACF-MK3	10



PRODUCT CODE		SPECIFICATION	DISPLAY QTY
TRA/FSDU	ADP2	TRACER Deep Pencil Marker & Site Holster	20
	ALH1	TRACER Lead Holster – 6x Replacement leads in TRACER Holster (4x 2B & 2x Yellow)	20
	ALP1	TRACER 12 Deep Hole Replacement Leads – Graphite	10
	AMK4	TRACER Ultimate Construction Marker Kit With Holsters	10
	AMK3	TRACER Complete Marking Kit – Deep Hole Marker Pen, Pencil and ALH1 Lead Set with Holsters	10
	ALP2	TRACER 12 Deep Hole Replacement Leads – Red & White	10
	APMK1	TRACER Pack of 4x Permanent Marker's (Black, Blue, Red)	10
	APM1	TRACER Permanent Construction Marker (Black)	10
	AHD1	TRACER Heavy Duty Marker – (Black)	10
	APTM1	TRACER Paint Marker – (Yellow)	10
	APTM2	TRACER Paint Marker – (White)	10
	APST2	TRACER Scribe Tool c/w Deep Hole Pencil & 6x Replacement lead holster	5
	ACP1	TRACER 4H Carpenters Pencils (Hard Lead) 10pc – c/w Sharpener	10
	ACF-MK3	TRACER Clog Free Marker Kit – 3PC Pack (1x Black / 1x Blue / 1x Red) C/W Site Holsters.	10

METAL COUNTERTOP DISPLAY

Dimensions: H 750 mm x W 400 mm x D 230 mm

A versatile metal display option designed to stand proudly at the trade counter or equally effectively within a larger display area. With up to 12 hooks the display allows for a very comprehensive range of TRACER products within the fully branded and high-impact metal unit.

HOOKS

ALH1	10
ADP2	20
AHD1	10

HOOKS

ACF-MK3	10
APTM2	10
APTM1	10
APM1	10

HOOKS/BASE

APMK1	10
APM2	10
APM3	10
AMK3	10



PRODUCT CODE	SPECIFICATION	DISPLAY QTY
TRA/POS	ALH1 TRACER Lead Holster – 6x Replacement Leads in TRACER Holster (4x 2B & 2x Yellow)	10
	ADP2 TRACER Deep Pencil Marker & Site Holster	20
	AHD1 TRACER Heavy Duty Marker – (Black)	10
	ACF-MK3 TRACER Clog Free Marker Kit – 3PC Pack (1x Black / 1x Blue / 1x Red) C/W Site Holsters.	10
	APTM2 TRACER Paint Marker – (White)	10
	APTM1 TRACER Paint Marker – (Yellow)	10
	APM1 TRACER Permanent Construction Marker (Black)	10
	APMK1 TRACER Pack of 4x Permanent Marker's (Black, Blue, Red)	10
	APM2 TRACER Permanent Marker (Blue)	10
	APM3 TRACER Permanent Marker (Red)	10
	AMK3 TRACER Complete Marking Kit – Deep Hole Marker Pen, Pencil and ALH1 Lead Set with Holsters	10

TRACER STATION

Dimensions: H 1700 mm x W 665 mm x D 451 mm

The complete range of TRACER measuring and marking tools. Introducing the TRACER Station. An eye-catching display stand holding a complete range of marking and measuring tools within a minimal footprint.



PRODUCT CODE		SPECIFICATION	DISPLAY QTY
TRA/MBS	APTM1	TRACER Paint Marker – (Yellow)	10
	APTM2	TRACER Paint Marker – (White)	10
	APMK1	TRACER Pack of 4x Permanent Markers (Black, Blue, Red)	10
	APM1	TRACER Permanent Construction Marker (Black)	10
	APM2	TRACER Permanent Marker (Blue)	10
	APM3	TRACER Permanent Marker (Red)	10
	AHD1	TRACER Heavy Duty Marker – (Black)	10
	ADP2	TRACER Deep Pencil Marker & Site Holster	20
	ALH1	TRACER Lead Holster – 6x Replacement Leads in TRACER Holster (4x 2B & 2x Yellow)	10
	ATM5	TRACER 5m Tape Measure – Nylon coated + large magnetic hook	12
	AMK1	TRACER Deep Pencil Marker with Replacement Lead Holster set	10
	AMK3	TRACER Complete Marking Kit – Deep Hole Marker Pen, Pencil and Lead set with Holsters	10
	AMP2	TRACER Double Tipped Marker Pen & Site Holster	10
	ACF-MK3	TRACER Clog Free Marker Kit – 3PC Pack (1x Black / 1x Blue / 1x Red) C/W Site Holsters	10
	APST2	TRACER PROSCRIBE with Deep Hole Pencil, Leads and Carry Case	5
	APS7	TRACER 7" ProSquare	6
	APS12	TRACER 12" ProSquare	6
	APMA1	TRACER ProMitre Angle Measuring Tool	10

CARDBOARD COUNTERTOP DISPLAY

Dimensions: H 350 mm x W 400 mm x D 207 mm

Optimised for consistent sell-through across the profile, the unit is delivered with 20 deep hole pencils, 20 replacement lead packs and 10 long nib markers. Upon reorder, you can easily reconfigure the profile to suit your specific requirements.

UNIT	
ADP2	20
ALH1	20
ALNP2	10



PRODUCT CODE		SPECIFICATION	DISPLAY QTY
ACDU3	ADP2	TRACER Deep Pencil Marker & Site Holster	20
	ALH1	TRACER Lead Holster – 6x Replacement leads in TRACER Holster	20
	ALNP2	TRACER Long Nib Marker Pen & Site Holster (Twin Pack)	10

COMPACT COUNTER DISPLAY UNIT

Dimensions: H 350 mm x W 255 mm x D 220 mm

Designed to maximise counter space while providing an eye-catching home for the most popular items in the TRACER range. The TRACER Compact Counter Display Unit contains 20 TRACER Deep Hole Construction Pencils and 10 TRACER Replacement Lead Holsters.

UNIT

ADP2	20
ALH1	10



PRODUCT CODE	SPECIFICATION		DISPLAY QTY
ACDU4	ADP2	TRACER Deep Pencil Marker & Site Holster	20
	ALH1	TRACER Lead Holster – 6x Replacement leads in TRACER Holster	10

LOOSE COUNTER DISPLAY UNIT

Dimensions: H 306 mm x W 196 mm x D160 mm

The TRACER Loose Counter Display Unit provides the quickest and simplest unit for point of sale purchase. Stocked with 20 Deep Hole Construction Pencils and 10 Replacement Lead Sets all free of packaging, providing a quick grab and go for customers.



UNIT

ADP2	20
ALH1	10

PRODUCT CODE	SPECIFICATION		DISPLAY QTY
ALDU1	ADP2	TRACER Deep Pencil Marker & Site Holster (Loose)	20
	ALH1	TRACER Lead Holster – 6x Replacement leads in TRACER Holster (Loose)	10



DEEP HOLE CONSTRUCTION PENCIL WITH HOLSTER

All-purpose deep hole construction pencil with fully extendible lead for marking up to 145mm depth.

- Mark 100mm depth in a 3mm hole
- Mark 145mm depth in a 6mm hole
- Shirt/Trouser clip
- Inbuilt sharpener on site holster for maximum precision
- Long sturdy metal shaft



WATCH VIDEO



0 748079 735026

SPECIFICATION

Deep Pencil Marker & Site Holster

PACK QTY	DISPLAY QTY	PRODUCT CODE
1	20	ADP2



6 DEEP HOLE REPLACEMENT LEADS WITH HOLSTER

Replacement leads for TRACER deep hole construction pencil (6 x 2B graphite).

- 6 x 120mm leads including 6 x graphite 2B
- For use with the TRACER Deep Hole Pencil
- Always to hand with TRACER Site Holster
- New anti-snap lead dispenser
- Maximum protection built specifically for site work



5 060668 270103

SPECIFICATION

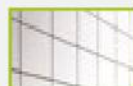
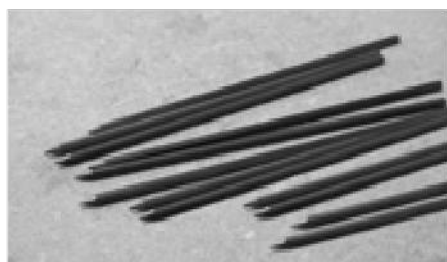
6 x Replacement leads in TRACER Holster (6 x 2B Graphite)

PACK QTY	DISPLAY QTY	PRODUCT CODE
1	10	ALH1

12 DEEP HOLE REPLACEMENT LEADS - GRAPHITE

The TRACER graphite replacement leads for the TRACER deep hole construction pencil. Suitable for a range of materials including wood, plastic, tile and metal.

- 12 x 2.8mm 2B replacement graphite leads
- Perfect for construction marking
- For use with the TRACER Deep Hole Pencil



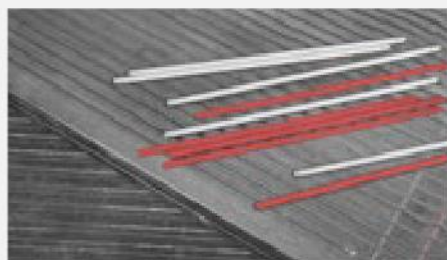
SPECIFICATION	PACK QTY	DISPLAY QTY	PRODUCT CODE
12x Replacement leads for TRACER deep hole construction pencil (12 x 2B graphite)	12	10	ALP1



12 DEEP HOLE REPLACEMENT LEADS - RED & WHITE

The TRACER red and white replacement leads for the TRACER deep hole construction pencil. Suitable for a range of materials including wood, plastic, tile and metal.

- 12 x 2.8mm 2B replacement graphite leads
- Perfect for construction marking
- For use with the TRACER Deep Hole Pencil



SPECIFICATION	PACK QTY	DISPLAY QTY	PRODUCT CODE
12 x Replacement leads for TRACER deep hole construction pencil (6 x red, 6 x white)	12	10	ALP2





NEW 6 TOUGH REPLACEMENT LEADS WITH HOLSTER - GRAPHITE

Replacement leads for the TRACER TOUGH construction pencil (6 x 2B graphite).

- Durable 5.2 mm leads
- Anti-snap lead dispenser
- Practical round leads
- 6 x 2B graphite leads



5 060668 273722

SPECIFICATION

6 TOUGH replacement leads with holster - graphite

PACK QTY	DISPLAY QTY	PRODUCT CODE
1	10	ATPL1



NEW 6 TOUGH REPLACEMENT LEADS WITH HOLSTER - RED

Replacement leads for the TRACER TOUGH construction pencil (6 x 2B graphite).

- Durable 5.2 mm leads
- Anti-snap lead dispenser
- Practical round leads
- 6 x 2B graphite leads



5 060668 273739

SPECIFICATION

6 TOUGH replacement leads with holster - red

PACK QTY	DISPLAY QTY	PRODUCT CODE
1	10	ATPL2

NEW 24 PRECISION REPLACEMENT LEADS WITH HOLSTER - GRAPHITE

Replacement leads for the TRACER precision construction pencil (24 x 2B graphite).

- 1.3mm Precision Lead
- Anti-snap lead dispenser
- Precision marking
- 24 x 2B graphite leads



SPECIFICATION	PACK QTY	DISPLAY QTY	PRODUCT CODE
24 Precision replacement leads with holster - graphite	1	10	APPL1



CARPENTERS PENCILS WITH SHARPENER

The TRACER Carpenters Pencil is a heavy-duty 4H pencil suitable for general purpose construction marking. Supplied in a quantity of 12 with a handy sharpener included, this is a perfection addition alongside the wider TRACER measuring and marking range.

- 4H Heavy-duty Pencil Lead, designed for the work site
- Reliable bold marking
- Mark on a variety of surfaces. Ideal for wood and plasterboard
- TRACER pencil sharpener included
- Includes 12 Carpenter Pencils



SPECIFICATION	PACK QTY	DISPLAY QTY	PRODUCT CODE
12 x Carpenters pencils with sharpener	12	10	ACP1





LONG NIB MARKER PENS WITH HOLSTERS

Long nib permanent construction marker pens suitable for deep hole marking up to 40mm (1.5") depth.

- Achieve deep hole marking up to 40mm (1.5") deep
- Perfect for general construction marking
- Suitable for wood, plastic, tile, metal
- Complete with holster and built in trouser/shirt clip



5 060668 273227

SPECIFICATION

Long nib marker pens with holsters (twin pack)

PACK
QTY

2

DISPLAY
QTY

10

PRODUCT
CODE

ALNP2



DOUBLE TIPPED MARKER PEN WITH SITE HOLSTER

Multipurpose permanent construction marker pen with reversible double tip for marking up to 50mm depth.

- Reversible double tip for marking thick and thin lines
- Long sturdy metal shaft
- Shirt/Trouser clip
- Always to hand with TRACER Site Holster



0 761856 099579

SPECIFICATION

Double tipped Marker Pen & Site Holster

PACK
QTY

1

DISPLAY
QTY

10

PRODUCT
CODE

AMP2

20 CLOG FREE PERMANENT CONSTRUCTION MARKERS

Black clog-free construction marker with the ability to mark on all surfaces even when dusty.

- Perfect for almost every surface
- Clog free marking even on dusty and shiny surfaces
- Mark on tiles, wood, glass, and brick
- Always to hand with TRACER Site Holster
- Black Sold individually or part of a kit



SPECIFICATION	PACK QTY	DISPLAY QTY	PRODUCT CODE
Clog Free Marker – black without site holster	20	10	ACF-BP1



48 PERMANENT CONSTRUCTION MARKERS - BLACK

Black permanent marker ideal for all general purpose construction marking.

- 1-2mm bullet point marker
- Durable acrylic tip, xylene, and toluene free
- Quick drying ink
- Available as a 4 pack, Includes 2 x black, 1 x blue and 1 x red
- All colours available individually



SPECIFICATION	PACK QTY	DISPLAY QTY	PRODUCT CODE
48 x Permanent Marker – Black	48	10	APM1-CDU





PERMANENT CONSTRUCTION MARKERS - BLACK

Black permanent marker ideal for all general purpose construction marking.

- 1-2mm bullet point marker
- Durable acrylic tip, xylene, and toluene free
- Quick drying ink
- Available as a 4 pack, Includes 2 x black, 1 x blue and 1 x red
- All colours available individually



SPECIFICATION

Permanent Marker - Black

PACK QTY	DISPLAY QTY	PRODUCT CODE
1	10	APM1



PERMANENT CONSTRUCTION MARKERS - BLUE

Blue permanent marker ideal for all general purpose construction marking.

- 1-2mm bullet point marker
- Durable acrylic tip, xylene, and toluene free
- Quick drying ink
- Available as a 4 pack, Includes 2 x black, 1 x blue and 1 x red
- All colours available individually



SPECIFICATION

Permanent Marker - Blue

PACK QTY	DISPLAY QTY	PRODUCT CODE
1	10	APM2

PERMANENT CONSTRUCTION MARKERS - RED

Red permanent marker ideal for all general purpose construction marking.

- 1-2mm bullet point marker
- Durable acrylic tip, xylene, and toluene free
- Quick drying ink
- Available as a 4 pack, Includes 2 x black, 1 x blue and 1 x red
- All colours available individually



SPECIFICATION	PACK QTY	DISPLAY QTY	PRODUCT CODE
Permanent Marker - Red	1	10	APM3



100 MINI MARKERS - BLACK

Mini permanent marker ideal for all general purpose construction marking, in black.

- 1-2mm bullet point marker
- Lanyard compatible for convenient marking
- Quick drying ink



SPECIFICATION	PACK QTY	DISPLAY QTY	PRODUCT CODE
Mini Permanent Markers - 100pc tub	1	100	AMM100





HEAVY DUTY PERMANENT MARKER - BLACK

A heavy-duty aluminium bodied permanent marker that is ideal for all general-purpose construction marking in black.

- 1-3mm bullet point marker
- Durable polyester tip, xylene, and toluene free
- Tough metal barrel with quick drying ink
- Ideal for general construction marking



SPECIFICATION

Heavy Duty Marker - Black

PACK QTY	DISPLAY QTY	PRODUCT CODE
1	10	AHD1



BULLET POINT PAINT MARKER - YELLOW

High-visibility yellow/white paint marker suitable for general purpose construction marking, even on shiny surfaces.

- 1-3mm bullet point marker
- Durable acrylic tip, xylene, and toluene free
- Tough metal barrel with unique valve action ink mechanism
- High visibility marking on all surfaces including glass and porcelain



SPECIFICATION

Paint Marker - Yellow

PACK QTY	DISPLAY QTY	PRODUCT CODE
1	10	APTM1

BULLET POINT PAINT MARKER - WHITE

High-visibility yellow/white paint marker suitable for general purpose construction marking, even on shiny surfaces.

- 1-3mm bullet point marker
- Durable acrylic tip, xylene, and toluene free
- Tough metal barrel with unique valve action ink mechanism
- High visibility marking on all surfaces including glass and porcelain



SPECIFICATION	PACK QTY	DISPLAY QTY	PRODUCT CODE
Paint Marker - White	1	10	APTM2



CONSTRUCTION CRAYON MARKER - BLACK

The TRACER Crayon Markers, providing universal and high visibility marking. Suitable for both wet and dry surfaces, the Crayon Markers are designed to mark on wood, plastic, tile, metal, concrete and brick and glass, making this an ideal marker for practically all trades.

- Universal construction crayon marker
- Able to mark on both wet and dry surfaces.
- Featuring a bold 3-6mm width tip
- Includes 12 Crayon Markers



SPECIFICATION	PACK QTY	DISPLAY QTY	PRODUCT CODE
12pc Crayon Marker Set - Black	12	10	ACM1





CONSTRUCTION CRAYON MARKER - RED

The TRACER Crayon Markers, providing universal and high visibility marking. Suitable for both wet and dry surfaces, the Crayon Markers are designed to mark on wood, plastic, tile, metal, concrete and brick and glass, making this an ideal marker for practically all trades.

- Universal construction crayon marker
- Able to mark on both wet and dry surfaces.
- Featuring a bold 3-6mm width tip
- Includes 12 Crayon Markers



5 060668 272626

SPECIFICATION

12pc Crayon Marker Set - Red

PACK QTY	DISPLAY QTY	PRODUCT CODE
12	10	ACM2



CONSTRUCTION CRAYON MARKER - YELLOW

The TRACER Crayon Markers, providing universal and high visibility marking. Suitable for both wet and dry surfaces, the Crayon Markers are designed to mark on wood, plastic, tile, metal, concrete and brick and glass, making this an ideal marker for practically all trades.

- Universal construction crayon marker
- Able to mark on both wet and dry surfaces.
- Featuring a bold 3-6mm width tip
- Includes 12 Crayon Markers



5 060668 272633

SPECIFICATION

12pc Crayon Marker Set - Yellow

PACK QTY	DISPLAY QTY	PRODUCT CODE
12	10	ACM3



PRO

Introducing the TRACER PRO Series

A groundbreaking lineup of construction marking products engineered for uncompromising quality and durability.

Built as a natural evolution of the widely acclaimed TRACER line, the PRO Series takes it to another level with its metal construction, ensuring maximum strength and longevity.

Designed for the construction industry, these tools are built to last and designed to excel in the harshest of job site conditions.

Enhanced with an upgraded TRACER green holster for maximum visibility, the PRO Series combines practicality with resilience. With these tools in hand, marking and measuring become effortless tasks, even in the most demanding environments.

Experience the future of marking with the TRACER PRO Series.



PRO



NEW PRO DEEP HOLE CONSTRUCTION PENCIL KIT WITH HOLSTERS

All purpose Pro Series deep hole construction pencil kit with six graphite replacement leads.

PRO Deep Hole Pencil with Site Holster

- Robust aluminium design
- Deep Hole Marking up to 145mm
- Integrated Pencil Sharpener
- Holster Grip
- Anti-Roll Feature

6 Replacement Leads with Site Holster

- 6x 2B Graphite Leads
- Anti-Snap Lead Dispenser



5 060668 273746

SPECIFICATION

Pro Deep Hole Construction Pencil Kit With Holsters

PACK QTY	DISPLAY QTY	PRODUCT CODE
1	10	AMK1-PRO



NEW PRO PRECISION CONSTRUCTION PENCIL KIT WITH HOLSTERS

Pro Series precision marking construction pencil kit with 24 graphite replacement leads..

PRO Precision Pencil with Site Holster

- Precision marking
- Robust Aluminium Design
- Anti-Roll Feature

24 Precision Leads with Site Holster

- 1.3mm Precision Lead
- Extra long 110mm Lead
- Anti-Snap Lead Dispenser
- 24x 2B Graphite Leads

PRO



SPECIFICATION	PACK QTY	DISPLAY QTY	PRODUCT CODE
PRO precision construction pencil kit with holsters	1	10	APPK1-PRO





PRO



NEW PRO TOUGH CONSTRUCTION PENCIL KIT WITH HOLSTERS

A Pro Series all purpose heavy duty construction pencil kit with four graphite and two red replacement leads.

PRO TOUGH Construction Pencil with Site Holster

- Robust Aluminium Design
- Anti-Roll Feature
- Integrated Pencil Sharpener

6 TOUGH Replacement Leads with Site Holster

- Practical Round Leads
- Anti-Snap Lead Dispenser
- Durable 5.2mm Leads
- High visibility marking



5 060668 273715

SPECIFICATION

PRO TOUGH Construction Pencil Kit With Holsters

PACK QTY	DISPLAY QTY	PRODUCT CODE
1	10	ATPK1-PRO



DEEP HOLE CONSTRUCTION PENCIL WITH REPLACEMENT LEAD SET

The ultimate all-purpose kit suitable for a wide range of materials, including wood, plastic, ceramics and metal. Containing a deep hole construction pencil with replacement lead set. Complete with site holster and anti-snap dispenser.

Deep Hole Pencil with Site Holster

- Mark 100mm depth in a 3mm hole
- Mark 145mm depth in a 6mm hole
- Inbuilt sharpener in site holster for maximum precision

6 Replacement Leads with Site Holster

- 6 x 120mm 2B replacement graphite leads
- Always to hand with TRACER Site Holster
- New anti-snap lead dispenser



SPECIFICATION	PACK QTY	DISPLAY QTY	PRODUCT CODE
Deep Pencil Marker w/ Replacement Lead set	1	10	AMK1





COMPLETE CONSTRUCTION MARKER KIT WITH HOLSTERS

Complete deep hole construction marking kit including replacement leads (6 x 2B graphite).

Deep Hole Pencil with Site Holster

- Mark 100mm depth in a 3mm hole
- Mark 145mm depth in a 6mm hole
- Inbuilt sharpener in site holster for maximum precision

6 Replacement Leads with Site Holster

- 6 x 120mm 2B replacement graphite leads
- Always to hand with TRACER Site Holster
- New anti-snap lead dispenser

Double Tipped Marker Pens with Site Holster

- Mark 50mm depth in a 5mm hole
- Reversible tip for thick and thin lines



0 748079 735033

SPECIFICATION

Complete Marking Kit – Deep Hole Marker Pen, Pencil and ALH1 Lead set with Holsters

PACK QTY	DISPLAY QTY	PRODUCT CODE
1	10	AMK3



ULTIMATE CONSTRUCTION MARKER KIT WITH HOLSTERS

The ultimate all-purpose kit suitable for a wide range of materials, including wood, plastic, tile, metal, concrete, brick, and glass. Containing a deep hole pencil, replacement leads and clog free markers.

Deep Hole Pencil with Site Holster

- Mark 100mm depth in a 3mm hole
- Mark 145mm depth in a 6mm hole
- Inbuilt sharpener in site holster for maximum precision

6 Replacement Leads with Site Holster

- 6 x 120mm 2B replacement graphite leads
- Always to hand with TRACER Site Holster
- New anti-snap lead dispenser

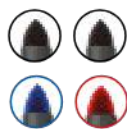
2 Clog Free permanent construction markers

- Clog free marking even on dusty and shiny surfaces
- Set includes black and red marker



SPECIFICATION	PACK QTY	DISPLAY QTY	PRODUCT CODE
Ultimate Marking Kit w/ Deep Hole Construction Pencil, Replacement Lead Set & 2 Clog-Free Construction Markers (Black and Red)	4	10	AMK4





PERMANENT CONSTRUCTION MARKER KIT

2x Black, 1x blue, and 1x red permanent marker ideal for all general-purpose construction marking.

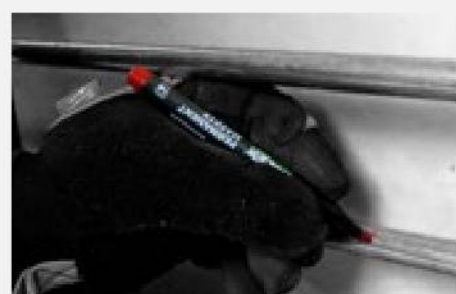
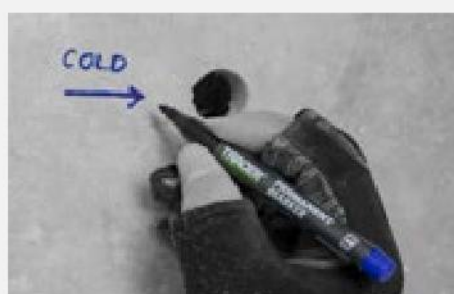
- 1-2mm bullet point marker
- Durable acrylic tip, xylene, and toluene free
- Quick drying ink
- Ideal for general construction marking



SPECIFICATION

4pc Pack of Permanent Markers – 2x Black, 1x Red & 1x Blue

PACK QTY	DISPLAY QTY	PRODUCT CODE
4	10	APMK1



CLOG FREE PERMANENT CONSTRUCTION MARKER KIT WITH HOLSTERS

1x Black, 1x red, and 1x blue clog-free construction markers with the ability to mark on all surfaces even when dusty.

- Perfect for almost every surface
- Clog free marking even on dusty and shiny surfaces
- Mark on tiles, wood, glass, and brick
- Always to hand with TRACER Site Holster



WATCH VIDEO



SPECIFICATION	PACK QTY	DISPLAY QTY	PRODUCT CODE
3pc Clog Free Marker Kit With 1x Black, 1x Blue, 1x Red Clog Free Marker & Site Holsters	3	10	ACF-MK3



5 060668 270035





[WATCH VIDEO](#)

PROSCRIBE MULTIFUNCTION MARKING KIT

Multifunction scribe tool with deep hole construction pencil and leads for profile scribing, parallel marking and more.

- 15+ uses
- Versatile, lockable design for multiple scribing applications.
- High quality, durable metal, and plastic construction
- Compact and lightweight and easy to use

Deep Hole Pencil with Site Holster

- Mark 100mm depth in a 3mm hole
- Mark 145mm depth in a 6mm hole
- Inbuilt sharpener in site holster for maximum precision



SPECIFICATION	PACK QTY	DISPLAY QTY	PRODUCT CODE
ProScribe Tool w/ Deep Hole Pencil & 6x Replacement Lead Holster	1	5	APST2





WATCH VIDEO

PROCONTOUR GAUGE

The Contour Gauge is a heavy-duty tool designed for easy profile scribing including flooring, skirting and pipework. With a lockable mechanism, the Contour Gauge locks into place for precise tracing.

- Designed for profile marking up to 130mm (5") / 250mm (10").
- Both metric and imperial measuring scales
- The lockable mechanism provides reliable transferal of profiles onto materials
- Heavy duty construction, built for the worksite
- Perfect for scribing around flooring, skirting, pipework and more
- Available in three different sets: 130mm (5")
- 250mm (10") + Deep Hole Pencil and 130mm (5") and 250mm (10") + Deep Hole Pencil



ACG1



ACG2



ACG3



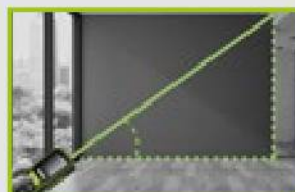
SPECIFICATION	PACK QTY	DISPLAY QTY	PRODUCT CODE
130mm ProContour Gauge	1	N/A	ACG1
250mm Procontour Gauge Marking Kit	2	N/A	ACG2
130mm And 250mm Procontour Gauge Marking Kit	3	N/A	ACG3



100M (328FT) LASER MEASURE (GREEN)

100m (328ft) laser distance measurer with high-visibility green beam, multiple measuring functions and inbuilt memory.

- Designed for six measurement applications including angle, distance, volume, and more.
- High-visibility green laser beam
- Memory function that stores up to 30 separate measurements
- Metric and imperial scales
- Precisely measure distances up to 100m (328ft) in length
- Measuring range up to 100m (328ft)
- 2x AA Rechargeable NI-MH Batteries included with a USB Type C charging cable
- Safety wrist strap



SPECIFICATION

100m (328ft) Laser Measure

PACK QTY	DISPLAY QTY	PRODUCT CODE
1	5	ALM100

AUTO-LOCK TAPE MEASURE

Heavy duty 5m (16'') tape measure with durable rubber encasing, auto-lock feature, and magnetic hook.

Heavy duty 8m (26'') tape measure with durable rubber encasing, auto-lock feature, and magnetic hook.

- Nylon coated
- Magnetic hook
- Auto-Lock
- 5m (16'') or 8m (26'') Tape
- Perfect for use alongside the wider TRACER range



ATM5



ATM8



SPECIFICATION	PACK QTY	DISPLAY QTY	PRODUCT CODE
5m Tape Measure	1	12	ATM5
8m Tape Measure	1	6	ATM8

NEW 100M (328FT) STRING LINE

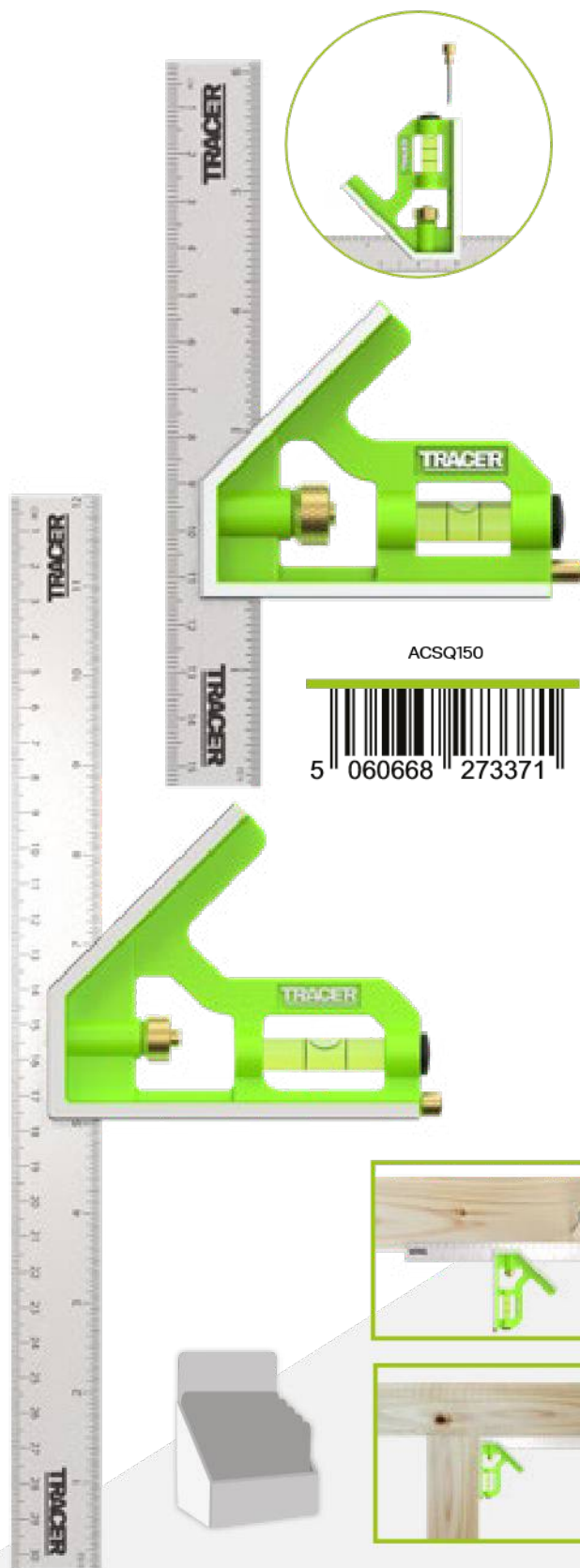
High-visibility, durable string line, with tangle-free integrated handle, and additional storage cover.

- 100m (328ft) Length
- High visibility green string line
- Low profile rotating handle
- Clear, anti-tangle cover



SPECIFICATION	PACK QTY	DISPLAY QTY	PRODUCT CODE
100M (328ft) String Line	1	5	ASLG100





ACSQ150



5 060668 273371

ACSQ300



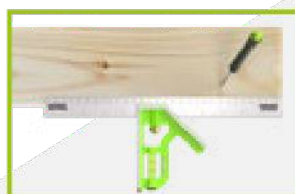
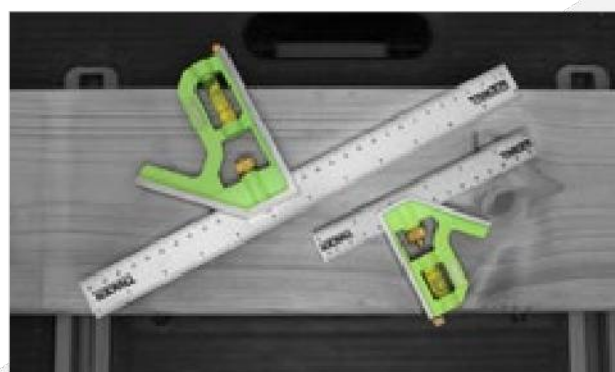
5 060668 273364

COMBINATION SQUARE

150mm (6") combination square for quick and easy measuring and marking, with integrated spirit level and scribe tool.

300mm (12") combination square for quick and easy measuring and marking, with integrated spirit level and scribe tool.

- Metric and imperial scales
- Horizontal and vertical precision marking
- 45° and 90° angle marking using the diagonal and horizontal edges
- Easily adjusted slide mechanism for repeatable marking
- Integrated spirit level for achieving a truly horizontal surface
- Built-in scribe tool
- Stainless Steel Rule
- Zinc Cast Handle



SPECIFICATION

150mm (6") Combination Square

300mm (12") Combination Square

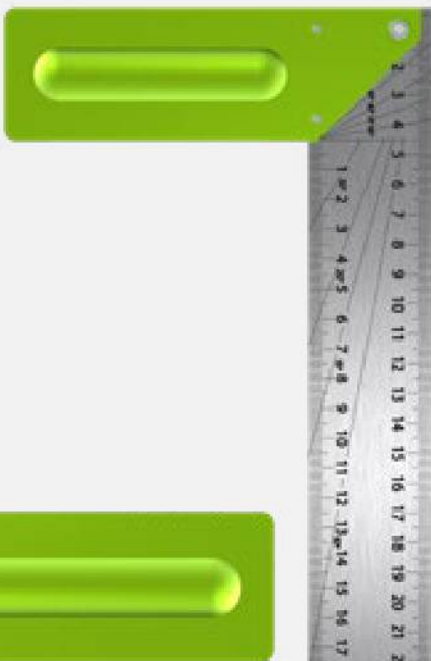
PACK QTY	DISPLAY QTY	PRODUCT CODE
1	10	ACSQ150
1	10	ACSQ300

CARPENTERS SQUARE

300mm (12") carpenters square with dual laser etched markings for internal and external marking and 0-90 angle marking.

12" carpenters square with dual laser etched markings for internal and external marking and 0-90 angle marking.

- Clear, etched metric/imperial markings resistant to wear and tear
- Two sets of angle lines for internal and external pivot points
- Robust but lightweight aluminium body
- Lower ruler allows for measuring and marking along the inner edge of the square
- Upper ruler allows for measuring and marking along the outer edge of the square
- Stainless Steel Rule
- CNC Machined Aluminium Handle



SPECIFICATION	PACK QTY	DISPLAY QTY	PRODUCT CODE
300mm (12") Carpenter Square (metric)	1	5	ACS300M
12" Carpenter Square (imperial)	1	5	ACS300I



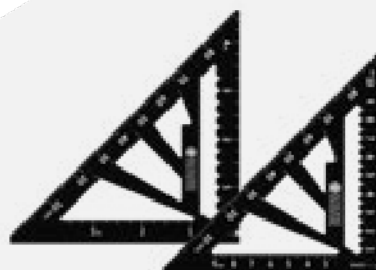


SPEED SQUARES

4.5"/110mm speed square with four pre-set angle marking guides, horizontal and vertical rulers for quick and easy measuring and marking.

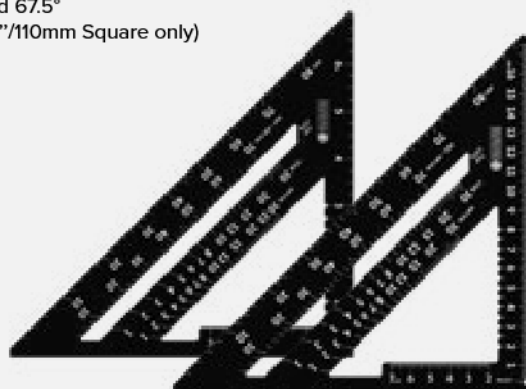
7"/175mm and 12"/300mm speed square with three pre-calculated angle marking guides, horizontal and vertical rulers for quick and easy measuring and marking.

- Achieve simple 0° - 90° marking by pivoting and marking along the long edge
- Equipped with both a horizontal and vertical ruler
- The horizontal ruler allows for quick measurements or markings from the inside edge of the square
- The vertical ruler allows for quick measurements or markings from the T-section of the square
- Robust but lightweight aluminium body
- Includes both Metric and Hip + Valley rafter scales for roofing (12"/300mm & 7"/175mm Squares only)
- Pre-calculated hip and valley scales for marking rafters when working in degrees. (12"/300mm & 7"/175mm Squares only)
- 1/3 Rafter scribe guides for easy marking. (Unique Feature - 12"/300mm Square only)
- Includes quick reference marking guides for 22.5°, 30°, 45°, and 67.5° (Unique Feature - 4.5"/110mm Square only)



ASQ4I

ASQ4M



ASQ7I

ASQ7M



ASQ12I

ASQ12M



SPECIFICATION	PACK QTY	DISPLAY QTY	PRODUCT CODE
4.5" Speed Square	1	5	ASQ4I
110mm (4.5") Speed Square	1	5	ASQ4M
7" Speed Square	1	5	ASQ7I
175mm (7") Speed Square	1	5	ASQ7M
12" Speed Square	1	5	ASQ12I
300mm (12") Speed Square	1	5	ASQ12M



APS7



APS12



WATCH VIDEO

PROSQUARE

Adjustable Prosquare 170mm (7") adjustable square with lockable arm and pre-calculated markings to make angled roofing cuts simple and easy.

260mm (12") adjustable square with lockable arm and pre-calculated markings to make angled roofing cuts simple and easy.

- Made from CNC Aluminium
- Metric ruler on plumb edge
- Lockable adjustable arm
- Easy to read scale
- True 90° angle
- 170mm (7") and 260mm (12")

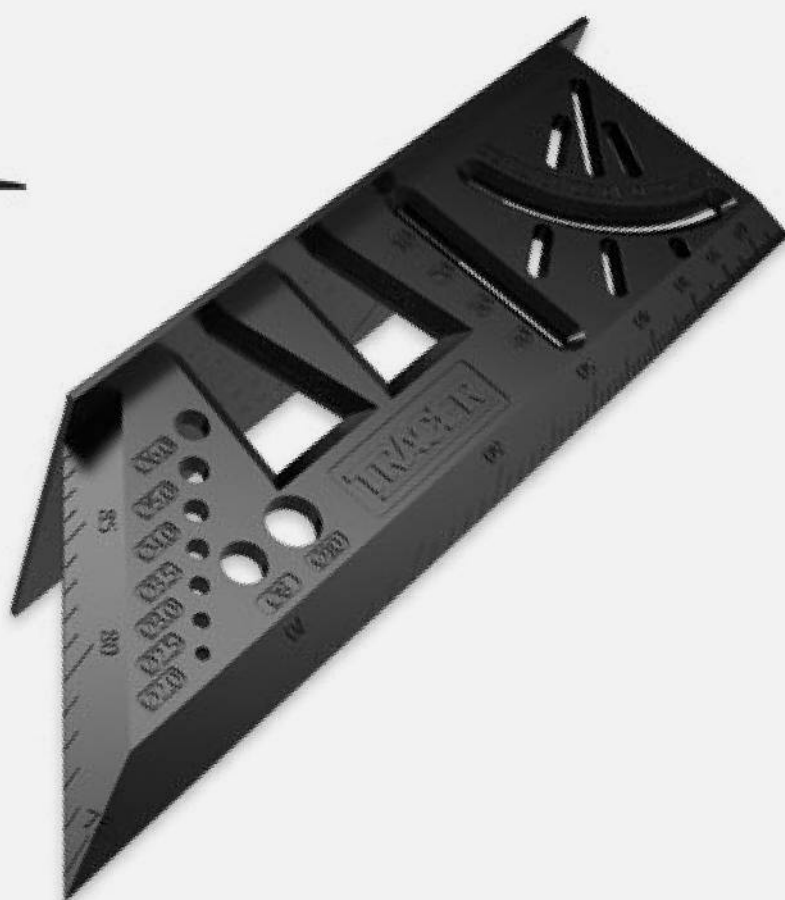


SPECIFICATION	PACK QTY	DISPLAY QTY	PRODUCT CODE
7" ProSquare	1	6	APS7
12" ProSquare	1	6	APS12

PROMITRE ANGLE MEASURING TOOL

Versatile mitre angle tool which simplifies measuring and marking on beams, pipes, and 3D work pieces.

- Perfect for three-dimensional marking due to its angled shape.
- Multiple integrated rulers and angle scales for quick and easy measuring and marking.
- Free angle marking from 0-90°
- Fixed 45° and 90° marking guides
- Parallel marking guide in increments of 1mm (1-55mm)
- Drill gauge to help quickly determine required hole size.
- Dovetail templates for easy marking
- Suitable for timber and pipework



WATCH VIDEO

SPECIFICATION	PACK QTY	DISPLAY QTY	PRODUCT CODE
ProMitre angle measuring tool	1	5	APMA1



5 060668 272244

ROYD

ROYD EU BV
Oud Camp 22,
3155DL Maasland,
Nederland

T: +31 (0) 88 6972 567
E: sales.eu@roydtoolgroup.com



ROYD UK
Saxon House,
23 Springfield Lyons Approach,
Springfield,
Chelmsford,
CM2 5LB,
UK

T: +44 (0) 1245 216 540
E: sales@roydtoolgroup.com



ROYD US LLC
31435 Stephenson Hwy
Madison Heights,
MI 48071
United States

T: +1 248 228 5063
E: sales.us@roydtoolgroup.com



TRACER[®]

tracer-tools.com

