



**NEW Arrival Q2-Q4 2023**

---



# RIKON



**Multifunction Workbench easily converts to work platform**  
**Built-in tool tray, (with protractor and ruler)**

- Platform Dimension 42" x 17" Aluminum, steel and MDF construction
- Three working height 22"/26"/30"
- Easily foldable design for storage
- Two 4" casters for easy transport
- Built in Power Strip
- Two swivel casters in bottom can work as transport cart
- Rated Load Test
  - 22" height: 1100
  - 26" height 440
  - 30" height 330

# RIKON



**Universal Stand with Adjustable legs make this ideal for planers, jointers, scroll saws etc..**

- Compact design for easy storage and carrying.
- Work platform size: 18" x 23"
- Width adjustable from 36" – 72"
- Height from work platform is 32"
- Legs fold/unfold easily, with spring lock on legs.
- Adjustable height 23"- 32"

# RIKON



**PRO Adjustable Sawhorses have new innovative features that traditional style sawhorses can't compete with**

- Adjustable height legs,
- 2 adjustable end brackets, 2 support arms or holding panels, anti-slip work surface
- quick fold-up design with carry handle for easy portability. The all-steel construction gives a load capacity rating of 1300 lbs. or 2600 lbs. for a pair! Sold in Packs of 2 sawhorses.



70-903 13" Bed Extension

Motor Horsepower	1 HP Brushless Motor
Motor Amps	6A. 60HZ
Motor Volts	115V, 1 PH
Motor RPM	3,200 RPM
Direction	Forward (C-Clockwise) & Reverse (Clockwise)
Number of Speeds	3
Speed Ranges	250-850 / 430-1,450 / 950-3,200 RPM
Swing Over Bed	12" (305 mm) 15" with outboard Extension
Swing Over Tool Rest	9-1/4" (235 mm)
Working Distance Between Centers	16-1/2" (419 mm)
Tool Rest Post Diameter	1" (25.4 mm)
Spindle Nose Inch x TPI	1" x 8 TPI
Headstock Taper	MT2
Tailstock Taper	MT2
Ram Travel	3-1/2" (90 mm)
Indexing Positions	24

## Bonus

- Includes Z3 4 Jaw 1" x 8 TPI Direct Thread Chuck
- 2" (50 MM) Jaws
- Worm Screw
- Wrenches

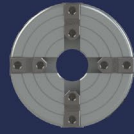




RZ3



*Pro Tools for Tool Pros*



RZ4



130mm Jaw



100mm Jaw



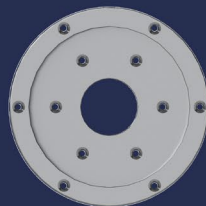
Power Grip Jaw



Step Jaw



Pen Plus  
Jaw



Face Plate Rings

- **Z3** and **Z4** Chuck bodies are made from high grade steel, built for strength, performance and long life.
- **Z3** and **Z4** are precision CNC machined providing smooth operation.
- The Chuck bodies' 4 large slides give supreme holding power and load bearing ability for the numerous jaw accessory attachments.
- **Z3** and **Z4** accept a variety of available jaws sets that are compatible with most chucks in the marketplace.
- **Z3** and **Z4** include a woodscrew, which is ideal for mounting bowl blanks, as the woodscrew is held in the jaws of the chuck, providing exceptional holding power
- **Z3** and **Z4** include a woodscrew and 50mm jaws which provide exceptional holding power for mounting and turning bowl blanks.



### 34-1049 Router Tabletop

- Phenolic Laminated Router Tabletop
- Table size: 31.5 x 23.62 x 3/4" (800X600X20mm)
- Center hole size: 11-3/4 "X 9-1/4" (295X235X10.5mm)
- Aluminum Track with 3/4" x 3/8" T-Slot and 1/4" Slot for hex bolt

### 34-1047 Router Fence

- Exceptional Design made of Hard Anodized Aluminum and MDF
- Includes Side Guide Rails with Rulers on both Sides
- Universal T-Track Top great for stops, hold downs, and feather boards
- Adjustable Height Bit Guard
- 2 1/2" OD x 2 1/4" ID Dust Port
- Overall dimensions: 36" x 4" x 3.25" (915X101.6X82mm)

### Router Lifts

- 34-1089 Designed for holding up to 4.2 diameter Router motor, steel gear Side lift adjustment
- 34-1078 Universal mount Top Lift Adjustment

### 34-1075 Router Motor

- 3 1/4HP Soft Start Brushless VS Motor 4.2" Diameter

### 34-1044 Router Stand

- Adjustable Steel Stand designed for Router Tabletops
- Dimensions 26" x 22" x 35" with adjustable feet

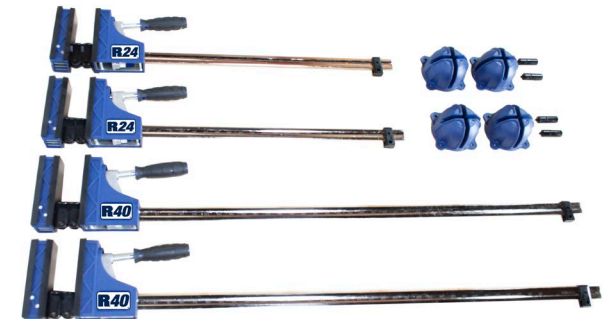


- **Exclusive design provides precision and power with exact 90 degree clamping at up to 2,000 lbs. pressure**
- **Non-marring composite resin jaw faces glue resistant in design, ensure even clamping pressure**
- **Moveable rail stand/end stop helps preset clamping capacity rapidly and accurately**
- **Acme threaded handle turns easily and applies continuous pressure.**
- **Ergonomic handle integrated with soft grip for added comfort and increased torque**
- **End stop helps preset clamping capacity rapidly and accurately**

### Available Sizes

<b>93-512</b>	<b>12" Parallel Clamp</b>
<b>93-524</b>	<b>24" Parallel Clamp</b>
<b>93-531</b>	<b>31" Parallel Clamp</b>
<b>93-540</b>	<b>40" Parallel Clamp</b>
<b>93-550</b>	<b>50" Parallel Clamp</b>
<b>93-560</b>	<b>60" Parallel Clamp</b>
<b>93-582</b>	<b>82" Parallel Clamp</b>
<b>93-598</b>	<b>98" Parallel Clamp</b>

### 93-4108 Parallel Clamp Kit (2 24" & 2 40")





### **45 Piece Bit Set**

- **Nickel plated CR-V Steel Bits**
- **12 T bits**
- **9 Hex bits**
- **7 Slotted bits**
- **8 Phillips bits**
- **2 Security bits**
- **3 Star bits**
- **1 Pin Reset bit**
- **1 Hex Extension 4 ½" Long**
- **Magnetic Chuck with Non-Slip Handle**
- **1 Straight Handle Tweezers**
- **Convenient Portable Storage Case**

**34-750**





Dealer Name

Purchase Order #

Order Form Email to [orders@rikontools.com](mailto:orders@rikontools.com) or fax to 978-528-5383

RIKON Model Number	Product Description	MSRP	Promo	Reg Cost	Intro Cost	Minimum Buy in	QTY	Available Date
98-4600	Universal Benchtop Tool Stand	\$ 179.99	149.99	\$ 126.00	\$ 100.00	4		July/August
98-5500	Multifunction Workbench Platform	\$ 249.99	199.99	\$ 175.00	\$ 150.00	2		July/August
98-2600	Pro Saw Horses Set of 2	\$ 199.99	179.99	\$ 140.00	\$ 120.00	4		July/August
34-1044	Router Stand	\$ 199.99	\$ 179.99	\$ 140.00	\$ 119.00	4		Oct/Nov
34-1047	Router Fence Assembly	\$ 229.99	\$ 206.99	\$ 161.00	\$ 145.00	4		Oct/Nov
34-1049	Phenolic Router Table Top	\$ 379.99	\$ 341.99	\$ 266.00	\$ 248.00	2		Oct/Nov
34-1055	MDF Router Table Top	\$ 199.99	\$ 179.99	\$ 140.00	\$ 119.99	2		Oct/Nov
34-1075	3 1/4 HP 4.2" Diameter 15A Brushless Soft Start VS Router Motor	\$ 299.99	\$ 269.99	\$ 210.00	\$ 180.00	2		Oct/Nov
34-1078	Router Lift Assembly	\$ 349.99	\$ 319.99	\$ 245.00	\$ 228.00	2		Oct/Nov
34-1089	New Router Lift Assembly	\$ 399.99	\$ 349.99	\$ 279.00	\$ 265.00	2		Oct/Nov
70-1516VSRK	New 12" x 16 1/2" VSR MIDI Lathe w/ Brushless Motor and Bonus 4 Jaw Chuck, 2" (50mm) Jaws and Worm Screw	\$ 949.99	\$ 849.99	\$ 665.00	\$ 615.00	4		Oct/Nov
34-750	45 piece tool accessory kit	\$ 19.99	\$ 14.99	\$ 14.00	\$ 10.00	12		Oct/Nov
93-4108	Parallel Clamp Kit	\$ 329.99	15% Off	\$ 214.00	\$ 193.00	12		Oct/Nov
93-512	12" Parallel Clamp	\$ 49.99	15% Off	\$ 32.00	\$ 29.00	12		Oct/Nov
93-524	24" Parallel Clamp	\$ 54.99	15% Off	\$ 36.00	\$ 32.00	12		Oct/Nov
93-531	31" Parallel Clamp	\$ 59.99	15% Off	\$ 39.00	\$ 35.00	12		Oct/Nov
93-540	40" Parallel Clamp	\$ 79.99	15% Off	\$ 52.00	\$ 45.00	12		Oct/Nov
93-550	50" Parallel Clamp	\$ 89.99	15% Off	\$ 59.00	\$ 50.00	8		Oct/Nov
93-560	60" Parallel Clamp	\$ 99.99	15% Off	\$ 65.00	\$ 55.00	8		Oct/Nov
93-582	82" Parallel Clamp	\$ 119.99	15% Off	\$ 78.00	\$ 68.00	6		Oct/Nov
93-598	98" Parallel Clamp	\$ 139.99	15% Off	\$ 91.00	\$ 81.00	6		Oct/Nov

NOTE: Order must be placed Prior to June 31st to qualify for Pre Order Cost. All product will ship when available in our DC and meets \$2500 ppd freight. (If your order does not meet the \$2500, it will ship with your normal stocking order.) All clamps orders must be placed in multiples of 2.